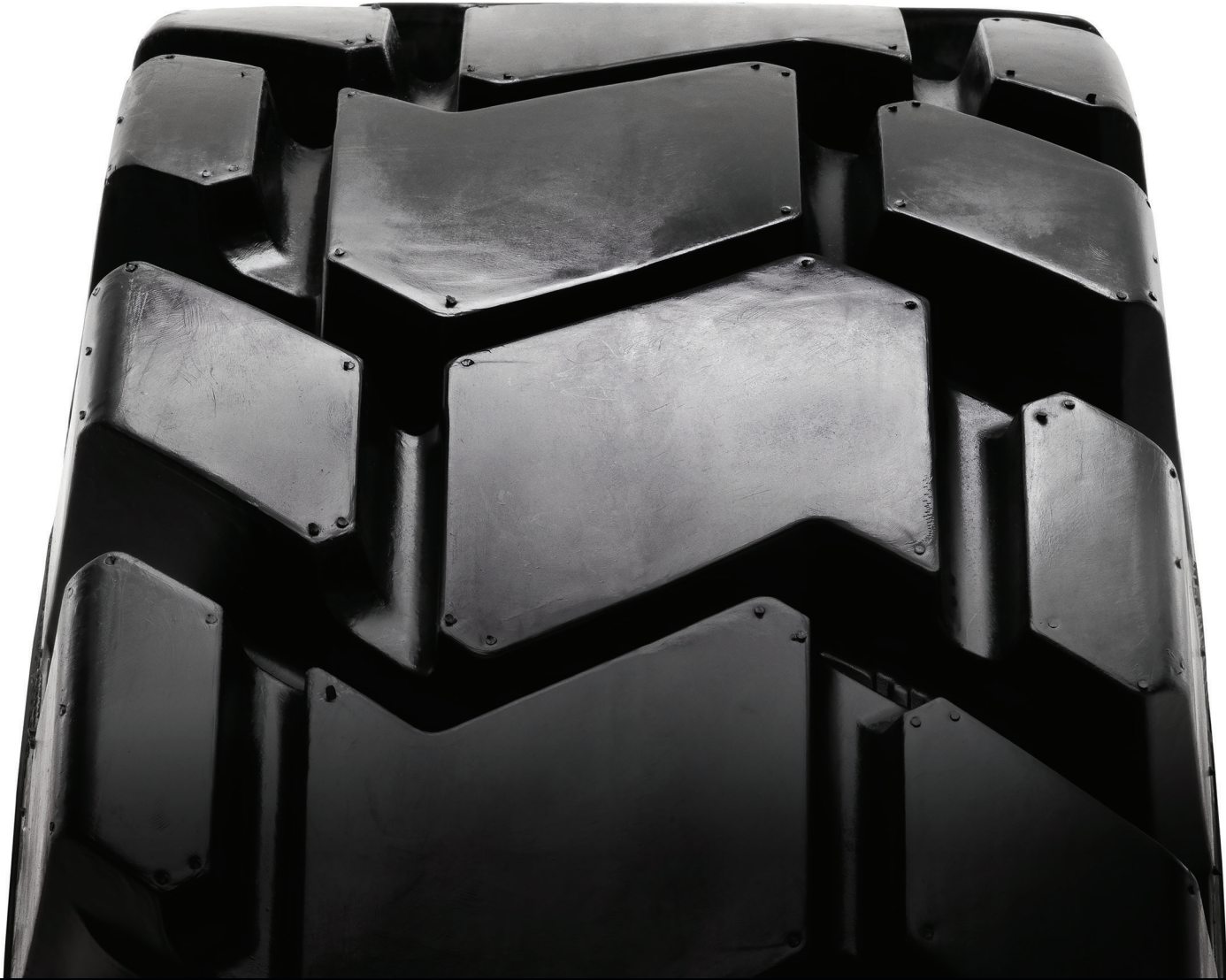


CAMSO SKS 775



SKID STEER
LOADERS



THE VERSATILE HEAVY-DUTY CHOICE

The ultra premium L5 skid steer tire solution. With ultimate durability and versatility, it's the best pneumatic tire choice for severe duty applications.

PERFORMANCE

TIRE LIFE



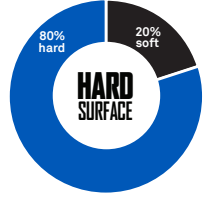
PUNCTURE RESISTANCE



TRACTION



CAMSO SKS 775



MASSIVE 50/32 TREAD DEPTH WITH HIGH LUG-TO-VOID RATIO

- Maximizes tire life and tread impact resistance

INNOVATIVE TREAD PATTERN

- Optimizes traction and versatility in mixed and hard surface applications



NEW IMPACT GUARD SIDEWALL DESIGN

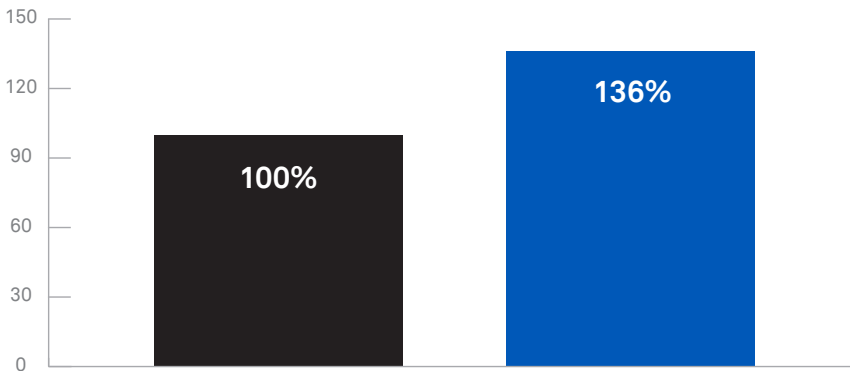
- Deflects debris to better protect sidewalls and reduce stress cracking

HAULER STEPPED SHOULDER LUGS

- Improves cleanout and traction in mixed surface applications

| TYRE SIZE | ALTERNATIVE SIZE | PR | O.T.D. | SERVICE TYPE | LOAD INDEX | SPEED SYMBOL | INFLATION PRESSURE |
|-------------|-------------------------|----|------------------------------|--------------|------------|--------------|--------------------|
| | | | [mm] [32 nd inch] | | | | [bar] [PSI] |
| 10-16.5 NHS | 260/70-16.5 265/70-16.5 | 10 | 38 (48) | NHS | 134 | A2 | 5.20 (75) |
| 12-16.5 NHS | 300/70-16.5 305/70-16.5 | 12 | 40 (50) | NHS | 145 | A2 | 5.50 (80) |
| 14-17.5 NHS | 355/70-17.5 | 14 | 41 (52) | NHS | 155 | A2 | 5.50 (80) |

TRACTION PERFORMANCE COMPARISON



- CAMSO SKS 775
- PREMIUM L5

Internal testing under controlled conditions demonstrates **enhanced traction performance** against a premium L5 tire due to an optimized, more versatile tread pattern.

AUTHORIZED DISTRIBUTOR:

